



**Construction**

**Finishes**

**Product Type**

**Water Pressure**

**Plumbing Systems**

**Standards**

**Cartridge**

**Fitting**

**Guarantee**

Brass Body (CuZn40Pb18)

Matt Black Electro Plated

Contemporary

Min. 0.2 bar, Max. 6.0 bar

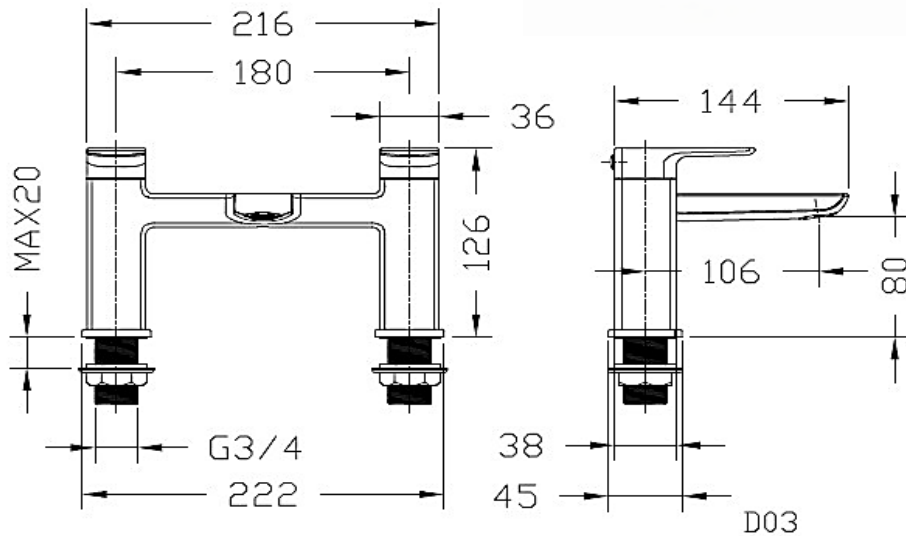
Suitable for all plumbing systems

Complies with BS5412, BS EN200

1/4 Turn 3/4" Ceramic Disc Valves

Brass 3/4" BSP tails

10 years against manufacturing faults (3 Years on Serviceable Parts).



**Flow Rates** (Litres per minute)

System Pressure	0.1 Bar	0.2 Bar	0.3 Bar	0.5 Bar	1.0 Bar	1.5 Bar	2.0 Bar	3.0 Bar	4.0 Bar	5.0 Bar
	5.1	7.0	-	12.2	17.6	-	-	-	-	-

The information contained on this page was correct at date of issue. Fitting dimensions are provided as a guide only. Some variation may occur due to manufacturing tolerances. We pursue a policy of continuing improvement in design and performance of our products and so reserve the right to change specifications without prior notice.